

## GM BLOWN FILM



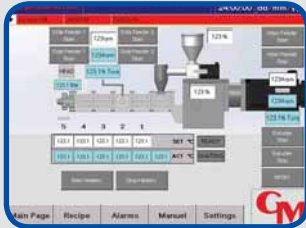
16 mm single screw extruder has different barrels like 24 L/D - 30 L/D - 35 L/D. It's possible to interchangeable barrel length between 24 L/D to 35 L/D depending to the customer needs. Barrel consist of seven parts and all these parts are resistant to high temperatures. To have a better mixture and a better dispersion all zones heaters can be controlled at different temperatures at the same time.

16 mm single screw extruder can be easily connected to a granulator, a cast film unit, a blown film unit or a coextruder etc. These different connection options mean different applications. 16 mm single screw extruder is providing samples by using less raw materials (100 gr.) with the segmented screw and the barrel. All Plc controls and cooling unit are placed under the table.

With very friendly user control software and 10" touch screen the control of rotational speed of feeder and screw, the set value of heaters can be adjusted very easily. In same time the Head pressure and the zone temperature values can be read from same screen. Also operator able to create unlimited new methods for different polymers, call and load them in control panel as needed.

# EXTRUSION LINES

## GM TWIN BLOWN FILM



With very friendly user control software and 10" touch screen the control of rotational speed of feeder and screw, the set value of heaters can be adjusted very easily. In same time the Head pressure and the zone temperature values can be read from same screen. Also operator is able to create unlimited new methods for different polymers, call and load them in control panel as needed.



The film blowing unit simultaneously blows up, cools, takes off, and winds up your extruded blown films. The bubble diameter and film thickness can be adjusted precisely.

| TECHNICAL SPECIFICATION            |         | GM SS 24          | GM SS 30          | GM SS 35          |
|------------------------------------|---------|-------------------|-------------------|-------------------|
| Nominal Screw Diameter $\emptyset$ | (mm)    | 16                | 16                | 16                |
| Barrel Length                      | ( L/D ) | 24                | 30                | 35                |
| Screw Speed                        | ( Rpm ) | 0-200             | 0-200             | 0-200             |
| Drive Load                         | ( Kw )  | 2                 | 2                 | 2                 |
| Temperature Control                | ( °C )  | 300 ( 450 option) | 300 ( 450 option) | 300 ( 450 option) |
| Torque                             | ( Nm )  | 60                | 60                | 60                |
| Min. Run Size                      | (Gr/Hr) | 100               | 100               | 100               |
| Max. Output                        | (Kg/Hr) | 3                 | 3                 | 3                 |
| Cooling Water Requirements         | (Lt/Dk) | 1                 | 1                 | 1                 |