

LABORATORY EXTRUDER

Modern concept for easy operation- Line control via interface



16 mm twin screw extruder with variable barrels (24 L/D, 30 L/D, 35 L/D or 40 L/D, gives the flexibility to change between barrels(Blocks) according to customer needs.Each barrel(Block) consists of seven high temperature resistant parts.

Thanks to independent heater in each block that gives more ability on temperature control of blocks to have more homogenous and more dispersion final mixture.

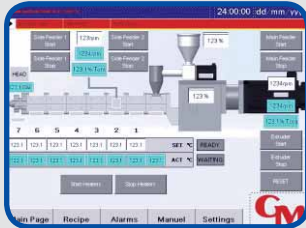
The compact design of 16 mm double screw extruder (Heaters control, barrels (Blocks), water cooling and a granulator place on same table) has big advantage of production samples by using few raw materials (till 100 gr per sample)

With very friendly user control software and 10'' touch screen the control of rotational speed of feeder and screw, the set value of heaters can be adjusted very easily. In same time the Head pressure and the zone temperature values can be read from same screen.

Also operator able to create unlimited new methods for different polymers, call and load them in control panel as needed.

EXTRUSION LINES

Ø16mm TWIN SCREW



With very friendly user control software and 10" touch screen the control of rotational speed of feeder and screw, the set value of heaters can be adjusted very easily. In same time the Head pressure and the zone temperature values can be read from same screen. Also operator is able to create unlimited new methods for different polymers, call and load them in control panel as needed.

**Made of strong steel
Off Barrel System ...**



Pelletising Line Options ;

The extrusion line can be supplied with either a cooling conveyor or a water bath to cool the strand.

There are two pelletizer options. The fixed length pelletiser is factory configured to produce either micro or full size pellets and the variable length.

Pelletiser with a user selectable pellet length.

TECHNICAL SPECIFICATION		GM TWIN 16/24	GM TWIN 16/30	GM TWIN 16/35	GM TWIN 16/40
Nominal Screw Diameter Ø	(mm)	16	16	16	16
Barrel Length	(L/D)	24	30	35	40
Screw Speed	(Rpm)	0-200	0-200	0-200	0-200
Drive Load	(Kw)	2	2	2	2
Temperature Control	(°C)	300 (450 option)	300 (450 option)	300 (450 option)	300 (450 option)
Torque	(Nm)	60	60	60	60
Min. Run Size	(Gr/Hr)	100	100	100	100
Max. Output	(Kg/Hr)	4,5	4,5	4,5	4,5
Cooling Water Requirements	(Lt/Dk)	1	1	1	1